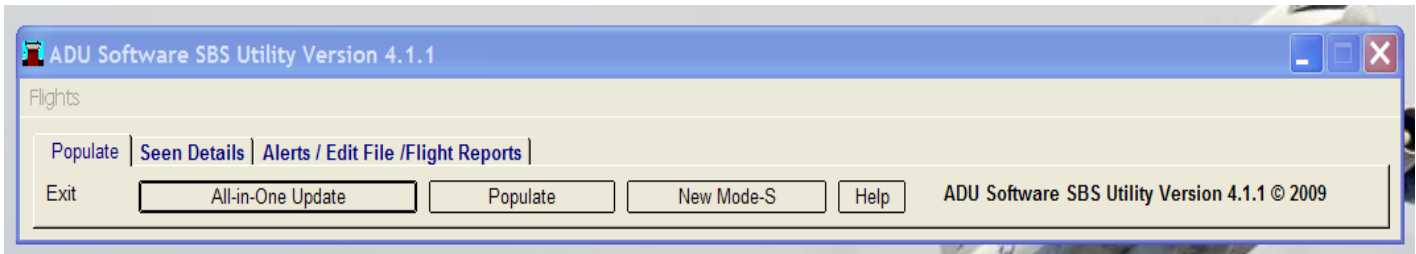


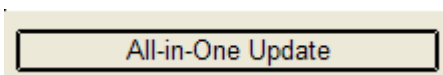
SBS Add On Utility Screen Shots

Tabkeys - By clicking a tabkey you can navigate through the utility



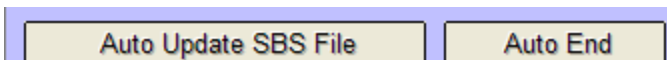
All-in-One Update.

This function will populate all the standard information including operator flag & ICAO codes. Press on the update button and this will automatically populate.



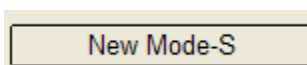
Auto Update SBS File.

Automatic – Behind the scenes this is writing back to your SQB file. Any aircraft incorrectly transponding will not be populated.



New Mode-S

This function has been designed so as the end user who has already edited his SQB file with logos to represent different aircraft, squadron numbers etc can now update blank Mode S without overwriting any information previously added.



Flights

This has been designed to allow you to monitor flight arrivals for your local airport.

As soon as you open for example flights1, when the flight code has been picked up by your SBS this will then appear in the table view with all information. Adding new flights - New flights can be added by clicking on add flight, this will automatically take you to the last record and you can then add your new flight number. This facility can be edited to represent your local airport.

Callsign	StartTime	ModeS	Registration	Manufacturer	Type	SerialNo	RegisteredOwners	EndTime
▶ QTR046	08/01/2009 14:17:16	06A061	A7-AEO	Airbus	A.330 302	918	Qatar Airways	
BEE7185	08/01/2009 14:13:28	400795	G-EMBI	Embraer	ERJ-145 EU	145126	flybe.	
AFR2268	08/01/2009 14:12:22	391E0A	F-GHQB	Airbus	A.320 211	236	Air France	
UAE18	08/01/2009 14:02:16	8960DA	A6-EBS	Boeing	B.777 31HER	32715	Emirates Airline	08/01/2009 14:14:33
SWR395	08/01/2009 13:57:34	4B16BA	HB-IPU	Airbus	A.319 112	713	Swiss International Air Lines	
MON517	08/01/2009 13:51:16	40076A	G-MARA	Airbus	A.321 231	983	Monarch Airlines	08/01/2009 14:09:53
BMI91W	08/01/2009 13:50:48	4055BA	G-TOYI	Boeing	B.737 3Q8	28054	bmi baby	08/01/2009 14:03:05
ESK3LA	08/01/2009 13:39:54	505CF0	OM-NGP	Boeing	B.737NG 7GL/W	34760	SkyEurope Airlines	08/01/2009 14:00:04

Today's Reports

This will allow you to print flight arrivals and departures.

ADU Software SBS Flights Report

<u>Arr/Dep</u>	<u>Callsign</u>	<u>Registration</u>	<u>Manufacturer</u>	<u>Type</u>	<u>SerialNo</u>	<u>RegisteredOwners</u>	<u>Date\Time</u>	<u>ModeS</u>
A	AWE734	N273AY	Airbus	A.330 323X	337	US Airways	8/1/09 8:29 am	A2B1B8
A	BMA706	G-WWBM	Airbus	A.330 243	398	bmi british midland	8/1/09 8:29 am	400901
D	TCX155K	G-OMYJ	Airbus	A.321 211	677	Thomas Cook Airlines	8/1/09 8:29 am	40067C
D	DLH6LX	D-AIRO	Airbus	A.321 131	563	Lufthansa	8/1/09 8:29 am	3C664F
A	SWR390	HB-IPX	Airbus	A.319 112	612	Swiss International Air Lines	8/1/09 8:29 am	4B16BD
A	SUS45U	OY-NCL	Dornier	Do 328 Jet 310	3192	British Airways	8/1/09 8:30 am	45B86C
A	DLH1VV	D-AIQW	Airbus	A.320 211	1367	Lufthansa	8/1/09 8:30 am	3C6637
A	AFR1668	F-GHQK	Airbus	A.320 211	236	Air France	8/1/09 8:30 am	391E0A
D	MON2518	G-OZBI	Airbus	A.321 231	2234	Monarch Airlines	8/1/09 8:34 am	400A7F
A	SDR01BA	SE-RAA	Embraer	ERJ-135 ER	145210	City Airline	8/1/09 8:41 am	4A8170
	BEE713N	G-JEDJ	De Havilland Canada	DHC-8 402	4058	flybe.	8/1/09 9:00 am	40092F
	MON516	G-MARA	Airbus	A.321 231	983	Monarch Airlines	8/1/09 9:01 am	40076A
A	FIN933	OH-LVA	Airbus	A.319 112	1073	Finnair	8/1/09 9:03 am	461F2E
D	MON654	G-OJEG	Airbus	A.321 231	1015	Monarch Airlines	8/1/09 9:10 am	40076B
	CPA038	B-HUL	Boeing	B.747 467F	30804	CathayPacific Airways	8/1/09 9:15 am	78014E
D	RYR5TW	EI-DAP	Boeing	B.737NG 8AS/W	33551	Ryanair	8/1/09 9:21 am	4CA1D2
A	SHT2E	G-EUYD	Airbus	A.320 232	3726	British Airways	8/1/09 9:24 am	405EE1
D	MON580	G-OZBS	Airbus	A.321 231	1428	Monarch Airlines	8/1/09 9:26 am	4008CB
	CPA001	B-HUR	Boeing	B.747 444BCF	24976	CathayPacific Airways	8/1/09 9:26 am	7801DD
A	BMA5QA	G-DBCJ	Airbus	A.319 131	2981	bmi british midland	8/1/09 9:29 am	400F99
D	EIN20T	EI-DEH	Airbus	A.320 214	2294	Aer Lingus	8/1/09 9:31 am	4CA216
D	AFR1469	F-GFKN	Airbus	A.320 211	128	Air France	8/1/09 9:36 am	39154D
D	SHT3P	G-EUUY	Airbus	A.320 232	3607	British Airways	8/1/09 9:40 am	405A47
A	CSA642	OK-FGR	Boeing	B.737 45S	28477	CSA Czech Airlines	8/1/09 9:41 am	49D069
D	TOM1BK	G-BYAX	Boeing	B.757 204	28834	Thomson Airways	8/1/09 9:45 am	400754
D	DLH4HP	D-ACJF	Canadair	CRJ 100LR	7200	Lufthansa Regional	8/1/09 9:55 am	3C4D46
D	VLM29M	OO-VLF	Fokker	F.50	20208	VLM Airlines	8/1/09 9:56 am	44D986
A	DLH2YJ	D-ABIB	Boeing	B.737 530	24816	Lufthansa	8/1/09 9:58 am	3C4922
D	TOM21P	G-THOO	Boeing	B.737 33V/W	29335	Thomson Airways	8/1/09 10:00 am	40072E
A	BMA7QA	G-DBCE	Airbus	A.319 131	2429	bmi british midland	8/1/09 10:07 am	400B83
A	CNO609	LN-RPU	Boeing	B.737NG 683	28312	Scandinavian Airlines Norway	8/1/09 10:08 am	478341
D	BMI3513	G-TOYE	Boeing	B.737 33A	27455	bmi baby	8/1/09 10:10 am	400C5E
D	SHT2903	G-DOCW	Boeing	B.737 436	25856	British Airways	8/1/09 10:12 am	400516

All Flight Reports

This will allow you to print all arrivals and departures for all your sessions.

07/01/2009
08/01/2009

ADU Software SBS Flights Report

Arr/Dep	Callsign	Registration	Manufacturer	Type	SerialNo	RegisteredOwners	Date/Time	ModeS
D	VLM29M	OO-VLL	Fokker	F.50	20144	VLM Airlines	7/1/09 8:17 am	44D98C
A	AFR1668	F-GJVW	Airbus	A.320 211	491	Air France	7/1/09 8:19 am	3926B6
D	MON654	G-OJEG	Airbus	A.321 231	1015	Monarch Airlines	7/1/09 8:19 am	40076B
D	DLH4HP	D-ACJD	Canadair	CRJ 100LR	7135	Lufthansa Regional	7/1/09 8:21 am	3C4D44
A	SHT2E	G-EUOD	Airbus	A.319 131	1558	British Airways	7/1/09 8:21 am	40093D
D	VLM92A	OO-VLI	Fokker	F.50	20226	VLM Airlines	7/1/09 8:31 am	44D989
D	SHT3P	G-EUOC	Airbus	A.319 131	1537	British Airways	7/1/09 8:33 am	400938
D	TOM14C	G-FDZP	Boeing	B.737NG 8K5/W	34692	Thomson Airways	7/1/09 8:37 am	4059E5
D	SHT2903	G-DOCA	Boeing	B.737 436	25267	British Airways	7/1/09 8:42 am	4004C9
D	BEE272G	G-JECZ	De Havilland Canada	DHC-8 402	4179	flybe.	7/1/09 8:50 am	40134E
A	DAL154	N707TW	Boeing	B.757 2Q8/W	27625	Delta Air Lines	7/1/09 8:52 am	A9704D
A	AWE734	N270AY	Airbus	A.330 323X	315	US Airways	7/1/09 8:54 am	A2A693
D	KLM1074	PH-BDZ	Boeing	B.737 406	25355	KLM Royal Dutch Airlines	7/1/09 8:56 am	48404F
A	FIN933	OH-LVF	Airbus	A.319 112	1808	Finnair	7/1/09 8:57 am	461F33
D	BEE341K	G-EC0Z	De Havilland Canada	DHC-8 402	4034	flybe.	7/1/09 8:58 am	405C10
D	BMA3831	G-RJXR	Embraer	ERJ-145 EP	145070	bmi regional	7/1/09 9:00 am	400B33
D	AUR671B	G-BWDB	Avions de Transport Regional	ATR 72 202	449	Aurigny Air Services	7/1/09 9:03 am	400889
D	BMA2PK	G-DBCG	Airbus	A.319 131	2694	bmi british midland	7/1/09 9:10 am	400D5A
D	SUS46U	OY-NCM	Dornier	Do 328 Jet 310	3190	British Airways	7/1/09 9:12 am	45B86D
D	SWR391	HB-IPT	Airbus	A.319 112	727	Swiss International Air Lines	7/1/09 9:14 am	4B16B9
D	TCX206K	G-OMYJ	Airbus	A.321 211	677	Thomas Cook Airlines	7/1/09 9:15 am	40067C
D	TCX528K	G-FCLB	Boeing	B.757 28A	28164	Thomas Cook Airlines	7/1/09 9:17 am	400618
A	DAL64	N171DZ	Boeing	B.767 332ER	29690	Delta Air Lines	7/1/09 9:21 am	A11D47
A	BMA7QA	G-DBCE	Airbus	A.319 131	2429	bmi british midland	7/1/09 9:22 am	400B83

Seen Details

Update SBS Interested Field and Seen Details.

Flights

Populate **Seen Details** Alerts / Edit File /Flight Reports

Exit

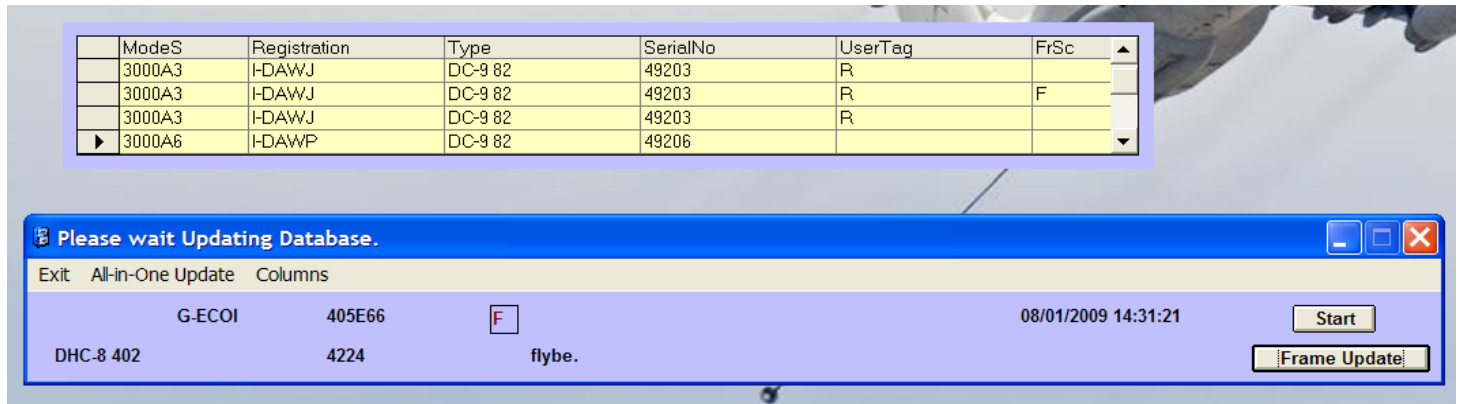
Sta	St	Flag	In	Operator	Callsign	Reg	Us	Type	Altitude ↑	ICAO
	→	UK		BRITISH AIRWAYS		G-BUSK	S	A.320 211	0 ft	A320
	→	FR		AIR FRANCE	AFR2268	F-GHQK	S	A.320 211	500 ft	A320
	→	UK				G-BYUZ		G 115 E Tutor	3,900 ft	G115
	→	UK		Thomsonfly	TOM5PJ	G-THOF	S	B.737 3Q8	6,000 ft	B733
	→	UK	N			G-CFGB		Citation Sovereig	10,900 ft	C680
	→	UK	N			G-RAFX		Super King Air 20	12,000 ft	BE20
	→	UK			CWL91	XS712	S	125 Dominie T.2	14,075 ft	H25A
	→	DE	N	manx2.com	FKI68G	D-CNAG		Metroliner SA227	15,050 ft	SW4
	→	UK			TRTN42	XV105	S	VC-10 C1K	15,050 ft	VC10
	→	NL		KLM cityhopper	KLM1084	PH-OFE	S	F.100	18,425 ft	F100

New Aircraft

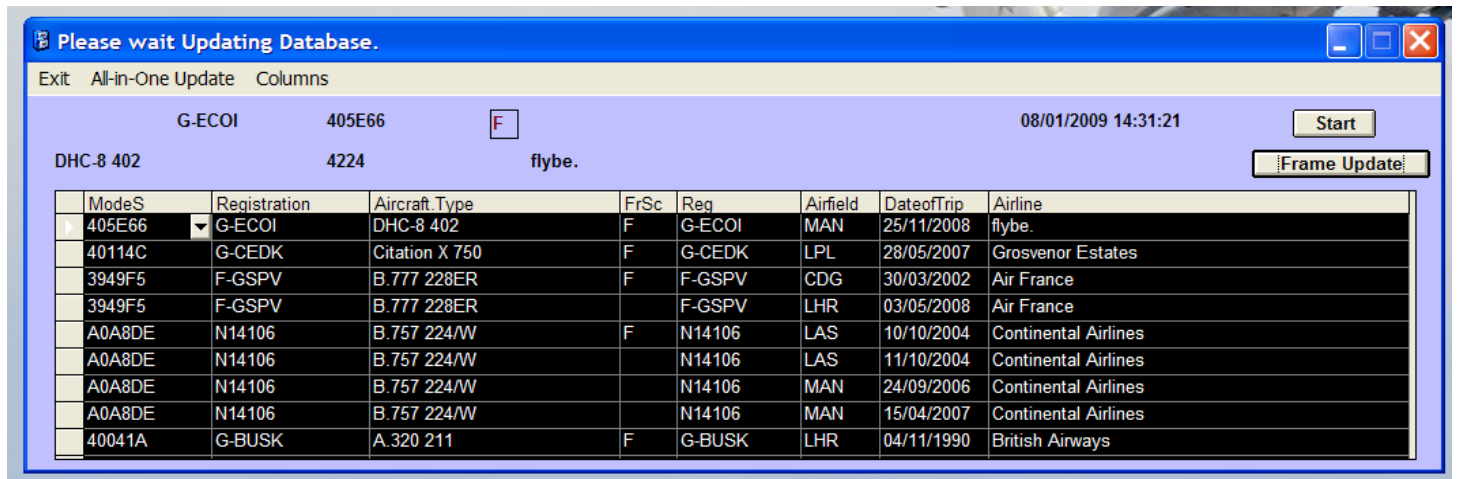
Seen

Frame and Regs you require.

Frame and Regs you require utility generates the relevant information from your sightings



This provides the facility to reveal more information on the aircraft bringing into play date seen, location seen, operator etc. If Hide is selected the additional information will be hidden from the screen.



Frame Update - Clicking this will now populate your SQB usertag field with: S = Seen, R=Reg Required, and a Blank value indicates a Frame is required.

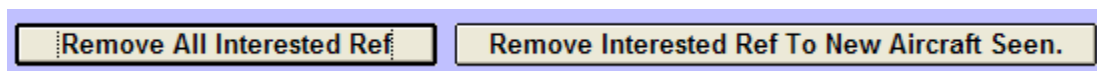
✈️	→	🇬🇧		BMI2773	G-TOYM	S	B.737 36Q	28,000 ft	B733
✈️	→	🇳🇱		KLM1084	PH-OFE	S	F.100	29,000 ft	F100
✈️	→	🇮🇹		EIN16D	EI-DEE	S	A.320 214	31,000 ft	A320
✈️	→	🇺🇦		AEW131	UR-VWF	R	B.767 383ER	32,000 ft	B763
✈️	→	🇺🇸		AAL41	N390AA	S	B.767 323ER	32,025 ft	B763
✈️	→	🇩🇪		DLH498	D-ABVA	S	B.747 430	32,050 ft	B744

_Regs you require.

Remove Interested Ref.

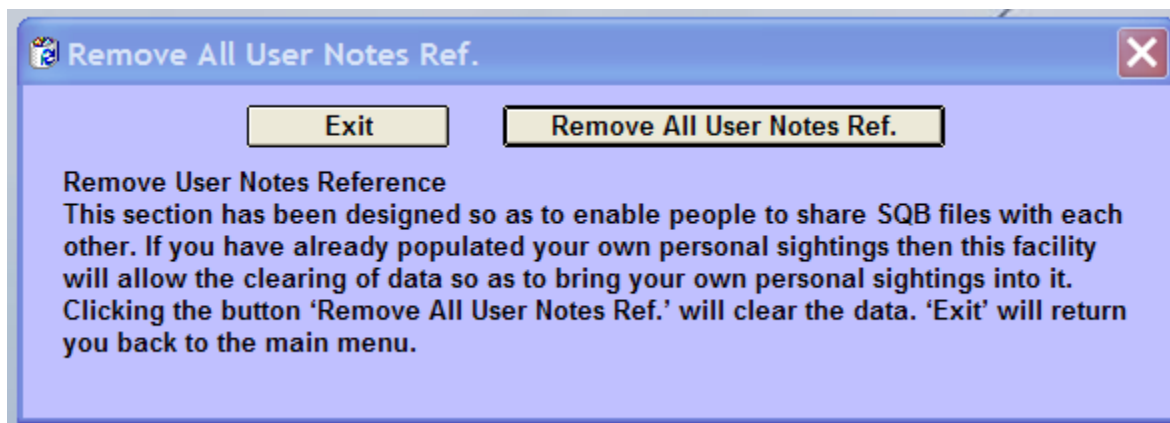
Self Explanatory, this removes ALL the interested references from display on the BaseStation data area of the radar screen.

Remove Interested Ref To New Aircraft Seen – After using ADU to enter your sightings, this selection will automatically remove any New sightings entered from the interested ref.



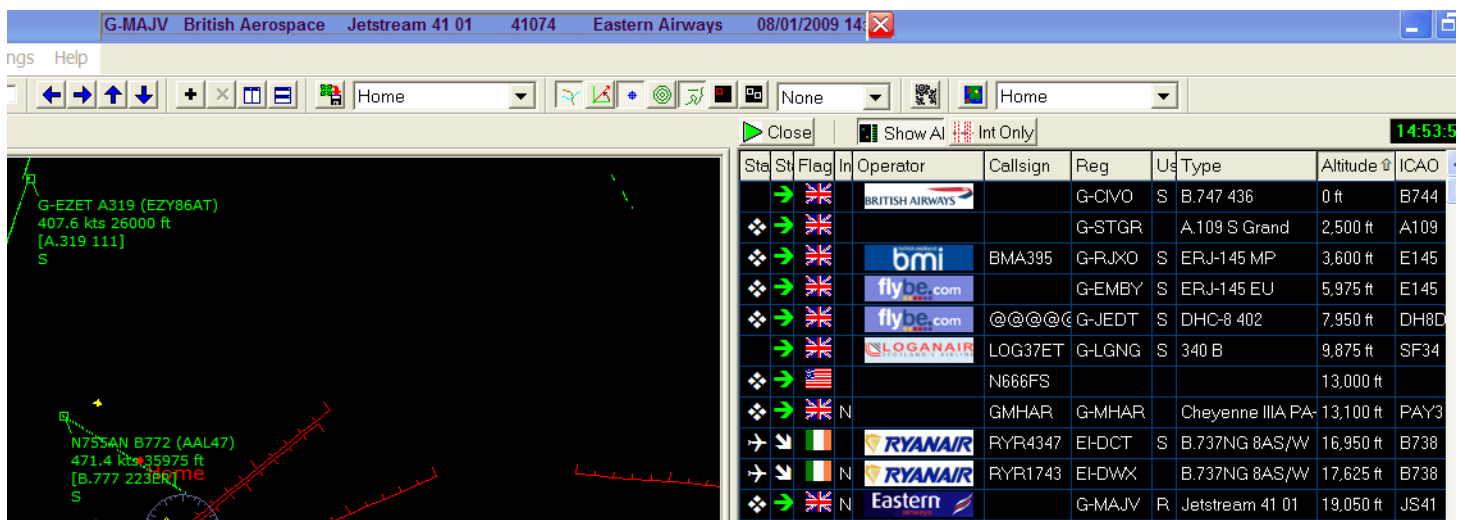
Remove User Notes Ref.

This section has been designed so as to enable people to share SQB files with each other. If you have already populated your own personal sightings then this facility will allow the clearing of data so as to bring your own personal sightings into it.



Msg Alert

This facility can only be used when the BaseStation is running and you have populated the Aircraft Interested Reference field. This will give you one message alert every couple of seconds of aircraft which are required.



Edit File

This section will enable you to edit and maintain your SQB file information. Incorrect Mode S codes can be deleted and redundant sessions can be deleted etc. From the text box displayed pull down the arrow and select sessions.

SessionID	LocationID	StartTime	EndTime
1	3	02/01/2009 19:55:39	02/01/2009 22:37:13
2	3	02/01/2009 22:43:38	02/01/2009 22:44:06
3	3	02/01/2009 23:00:13	03/01/2009 06:14:17
4	3	03/01/2009 06:33:31	03/01/2009 22:52:29
5	3	04/01/2009 10:54:33	04/01/2009 11:37:20
6	3	04/01/2009 12:55:20	04/01/2009 20:21:34
7	3	04/01/2009 22:50:39	06/01/2009 18:51:40
8	3	06/01/2009 18:55:00	07/01/2009 12:29:05
9	3	07/01/2009 13:55:17	07/01/2009 23:22:18
10	3	08/01/2009 08:28:04	08/01/2009 08:29:33
11	3	08/01/2009 08:29:38	

Edit Mode

This will enable you to remove all flight information and also remove certain sessions.

Aircraft		Network - DSN Source: Baseadu : BaseStation.sqb				Record Count: 18465
DBInfo	LastModified	ModeS	ModeSCountry	Country	Registration	
DBHistory	30/07/2008 15:04:13	400BDB	United Kingdom		G-EZPG	
SystemEvents	21/07/2008 19:25:11	400C46	United Kingdom		G-EZIC	
Locations	28/02/2008 21:37:34	4008E6	United Kingdom		G-MIDS	
Sessions	13/10/2006 18:32:13	4911A7	Portugal		CS-DMG	
Flights	06/04/2007 17:26:37	3950C9	France		F-GUGJ	
Aircraft	08/04/2008 18:04:29	AC710E	United States		N900VG	
Custom SQL	17/09/2006 11:42:15	A2BCDD	United States		N276AY	
8	17/09/2006 11:42:15	14/04/2008 14:25:44	43C38A	United Kingdom	ZH536	
9	17/09/2006 11:42:15	17/09/2006 19:38:06	40059C	United Kingdom	G-FTDF	
10	17/09/2006 11:42:15	16/12/2007 12:06:26	400179	United Kingdom	VP-BWN	
11	17/09/2006 11:42:16	21/01/2007 21:56:49	A895EB	United States	N652UA	
13	17/09/2006 11:42:16	18/05/2007 06:34:08	AB8C19	United States	N843MH	
14						
17						

Session Report

This will display the aircraft information on a daily basis.

SBSReport1.rpt
 07/01/2009
 08/01/2009

ADU Software SBS Flights Report			Wednesday, 7 January, 2009				
Time	Registration	Manufacturer	Type	SerialNo	RegisteredOwners	Callsign	Mode-S
Wednesday, 7 January, 2009							
8:08:40	G-JECW	De Havilland Canada	DHC-8 402	4152	flybe.		401106
8:09:15	G-EZKC	Boeing	B.737NG 73V	32424	easyJet Airline	EZY35QD	400A51
8:10:27	OY-MSI	Bombardier	BD-700 Global Express	9032	Execujet Scandinavia AS	VMP319	45B669
8:12:28	G-BPEK	Boeing	B.757 236/W	25808	OpenSkies	BOS022	400557
8:12:29	M-EERRY	Sikorsky	S-76 B	760356	Private		43E719
8:12:50	G-YMMK	Boeing	B.777 236ER	30312	British Airways	BAW17V	4007F6
8:14:13	G-WOWE	De Havilland Canada	DHC-8 311	256	Air Southwest	WQW302A	40079D
8:15:10	G-CERZ	Saab	2000	042	Eastem Airways	EZE	40127A
8:16:36	G-EZJM	Boeing	B.737NG 73V	30248	easyJet Airline	EZY2XH	400952
8:17:12	OO-VLL	Fokker	F.50	20144	VLM Airlines	VLM29M	44D98C
8:18:33	EI-CVC	Airbus	A.320 214	1443	Aer Lingus	EIN154	4CA15C
8:18:44	EI-RJZ	AVRO	146 RJ85	E2326	Air France	BCY5050	4CA6AD

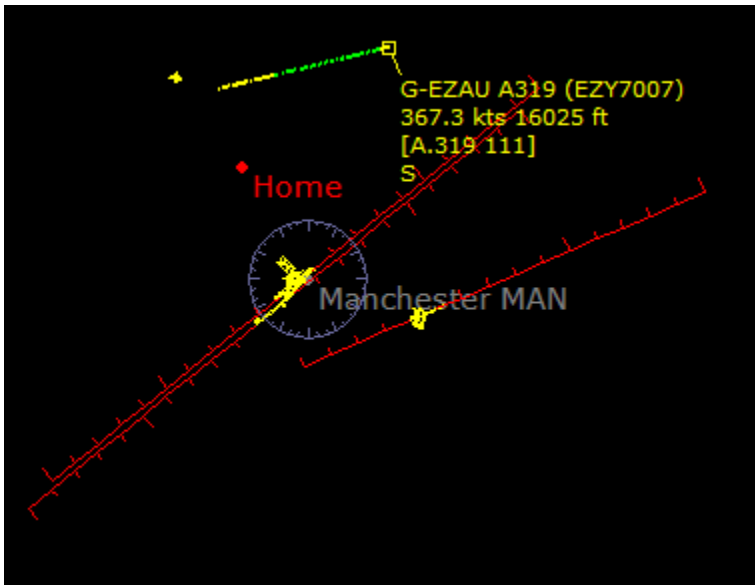
Session Report by Type - will display the information in date order then by type.

A.320 233
 A.321 131
 A.321 211
 A.321 231
 A.330 202
 A.330 203
 A.330 223
 A.330 243
 A.330 323E
 A.330 323X
 A.330 343X
 A.340 212
 A.340 311
 A.340 313X
 A.340 642
 Alpha Jet CSV

Airbus		A.319 111					
8:34:06	400AE2	G-EZEU	2283	easyJet Airline	A319	EZY6939	
8:34:21	400AF7	G-EZAM	2037	easyJet Airline	A319	EZY12ZF	
8:35:08	400AA7	G-EZEF	2176	easyJet Airline	A319	EZY64HB	
8:37:25	400AA2	G-EZEJ	2214	easyJet Airline	A319	EZY6877	
8:42:10	400D91	G-EZAG	2727	easyJet Airline	A319	EZY7943	
8:44:22	400A68	G-EZEA	2119	easyJet Airline	A319	EZY22CE	
8:49:07	400AE7	G-EZEZ	2360	easyJet Airline	A319	EZY3MA	
8:49:39	4010ED	G-EZBY	3176	easyJet Airline	A319	EZY24SG	

ADU Software SBS Flights Report

A Selection of screen shots taken from the ADU SBS Utility integrated with the BaseStation



Aircraft Details

Flag	Status: OK	Sauawk2265
Lat: 52.532°	Altitud: 22.675 ft	Speed: 405.8 kts
Long: -2.835°	Vert. Rate: 1280	Track: 185.4°

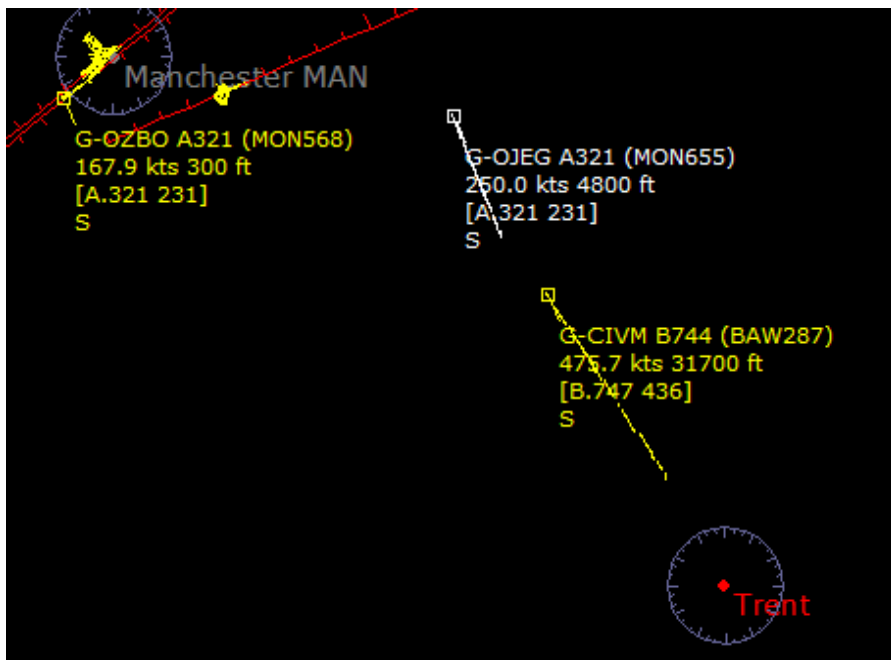
Registration Data

ModeS (Hex): 4009E3	Registration: G-TTOG	Country: United Kingdom
Status: A	Previous ID: F-WWDZ	Current Reg Date:
First Reg Date: 10/04/2003	De-reg Date:	
Manufacturer: Airbus	Type: A.320 232	Serial No: 1969
Popular Name:	Aircraft Class:	
Generic Name:	Engines:	
Ownership Status:	MTOW:	C of A Cat.:
Total Hours:	Year Built:	C of A Expiry:
Registered Owners: easyJet Airline		

UserNotes

G-TTOG 26/06/2003 LHR British Airways

Refresh Details | Edit Detail | Close



✈️	🇬🇧	easyJet	EZY56TR	G-EZKA	S	B.737NG 73V	27,075 ft	B737
✈️	🇬🇧	easyJet	EZY7007	G-EZAU	S	A.319 111	28,000 ft	A319
✈️	🇬🇧	BRITISH AIRWAYS	BAW49	G-VIIS	S	B.777 236ER	30,025 ft	B772
✈️	🇮🇪	Aer Lingus	EIN246	EI-CVC	S	A.320 214	31,000 ft	A320
✈️	🇬🇧	BRITISH AIRWAYS	BAW287	G-CIVM	S	B.747 436	32,175 ft	B744
✈️	🇬🇧	easyJet	EZY87HL	G-EZBN	S	A.319 111	33,950 ft	A319
✈️	🇳🇱	KLM		PH-BDS	S	B.737 406	34,000 ft	B734
✈️	🇬🇧	flybe.com		G-FBEJ	S	EMB-195 200LR	34,000 ft	E190
✈️	🇺🇸	nwa NORTHWEST	NWA37	N804NW	S	A.330 323X	35,975 ft	A333
✈️	🇮🇪	Aer Lingus	EIN607	EI-DEH	S	A.320 214	35,975 ft	A320
✈️	🇯🇴	ROYAL JORDANIAN	RJA263	JY-AIB	R	A.340 211	36,000 ft	A342
✈️	🇨🇭	KLM	KLM663	HB-JJA	S	B.737NG 7AK/W E	36,000 ft	B737
✈️	🇬🇧		ASTOR1	ZJ690		BD-700 Global Ex	37,775 ft	GLEX
✈️	🇬🇧	flyglobespan.com	GS324	G-CDEG	S	B.737NG 8BK/W	38,000 ft	B738

